

**m**  
**MEIKO**



**HYGIENE SYSTEMS UNDER THE MAGNIFYING GLASS**

**PRACTICAL SOLUTIONS FOR HOSPITALS AND CARE HOMES**

**Advice | Design | Planning | Installation | Service**



## HYGIENE SYSTEMS UNDER THE MAGNIFYING GLASS CUSTOMER-ORIENTED SOLUTIONS PERFECTION IN STAINLESS STEEL

MEIKO provides customised solutions for practical problems.

With its forward-looking designs and innovative products MEIKO proves why it has been a world leader for over 75 years.

Know-how acquired over many years, quality requirements in design and manufacture far above those required by standards, highly motivated and qualified staff and a customer-conscious sales and service network are key features underpinning our position as a world leader and our skills in cleaning and disinfection technology. This demanding area requires professional systems and solutions which meet customer and legal requirements alike.

With our outstanding flexibility and comprehensive advice from planning through to manufacturing, we provide our customers with an excellent service right from the beginning. Our Technical Service Department covering the whole country ensures that typical MEIKO reliability is available for all your requirements.

The following pages will show you what we mean by performance, planning, flexibility, service and quality.

<b>Philosophy</b>	<b>02</b>
Editorial	
<b>Design</b>	<b>03</b>
Design of a sluice room	
<b>Modernisation</b>	<b>04</b>
Modernisation of an existing sluice room	
<b>New buildings</b>	<b>08</b>
The design and development of new construction projects and integration of wet rooms	
<b>Requirements</b>	<b>10</b>
Legal requirements of modern hygiene systems in hospitals and care homes	
<b>References</b>	<b>11</b>
References & Customer service	



## **FLEXIBLE SOLUTIONS FOR CONTAMINATED WORK ROOMS**

We can solve even the most demanding space problems with our flexible and ultra-modern manufacturing technology.

Seamless connections and closed surfaces enable care to be truly perfect.

The logical operation of the integrated cleaning appliances, the practical and ergonomic modular construction of the stainless steel furniture and timeless design prove their worth in day-to-day operations.

**RENOVATION OF AN EXISTING  
WORK-ROOM**



Optimal working procedures, use of space and hygiene are key elements in this careful planning process.

Our modular systems mean

The MEIKO bedpan washer / disinfecter takes the more stringent hygiene requirements into account and indeed exceeds all the

In hospitals and particularly in residential care homes, the contaminated work-rooms often fail to comply with modern statutory provisions and the requirements of the nursing staff. These sluice rooms frequently leave much to be desired in the way of normal working practices.

MEIKO can provide cost-effective and precisely-targeted equipment for this demanding of renovation work.

Prior to conversion work we cooperate closely with specialist designers and hygiene experts to ensure that the requirements of the nursing staff are met.

that the requirements of even the widest possible range of wards can be met.

standards in force at the present time.



Contaminated work-room after renovation.

**FAST SOLUTIONS  
FOR IMMACULATE  
RENOVATIONS**

| Ludwigsburg  
Hospital



The complex processes of requirements analysis, planning, dismantling, removal and disposal of the old equipment on the one hand and, on the other hand, the installation, operation and servicing of the new equipment must be perfectly coordinated in renovation and modernisation projects.

| CBT Care Home,  
St. Augustin



## TWO REAL-LIFE EXAMPLES

| Contaminated sluce room before modernisation. (above)



| Dismantling and removal.

| New equipment and pipework.



| Installation of dry walling and tiling.

An intelligent MEIKO solution, stainless steel instead of tiles, supports you in simple renovation projects. The MEIKO rear wall with integral supply and waste pipes allows all the existing supply and waste pipes in the room to be used.

If, on the other hand, your renovation work is complex and structural changes are necessary, the experienced MEIKO project control team will assist you in the planning and implementation phase. Satisfied customers who have been with us for many years are our best reference.

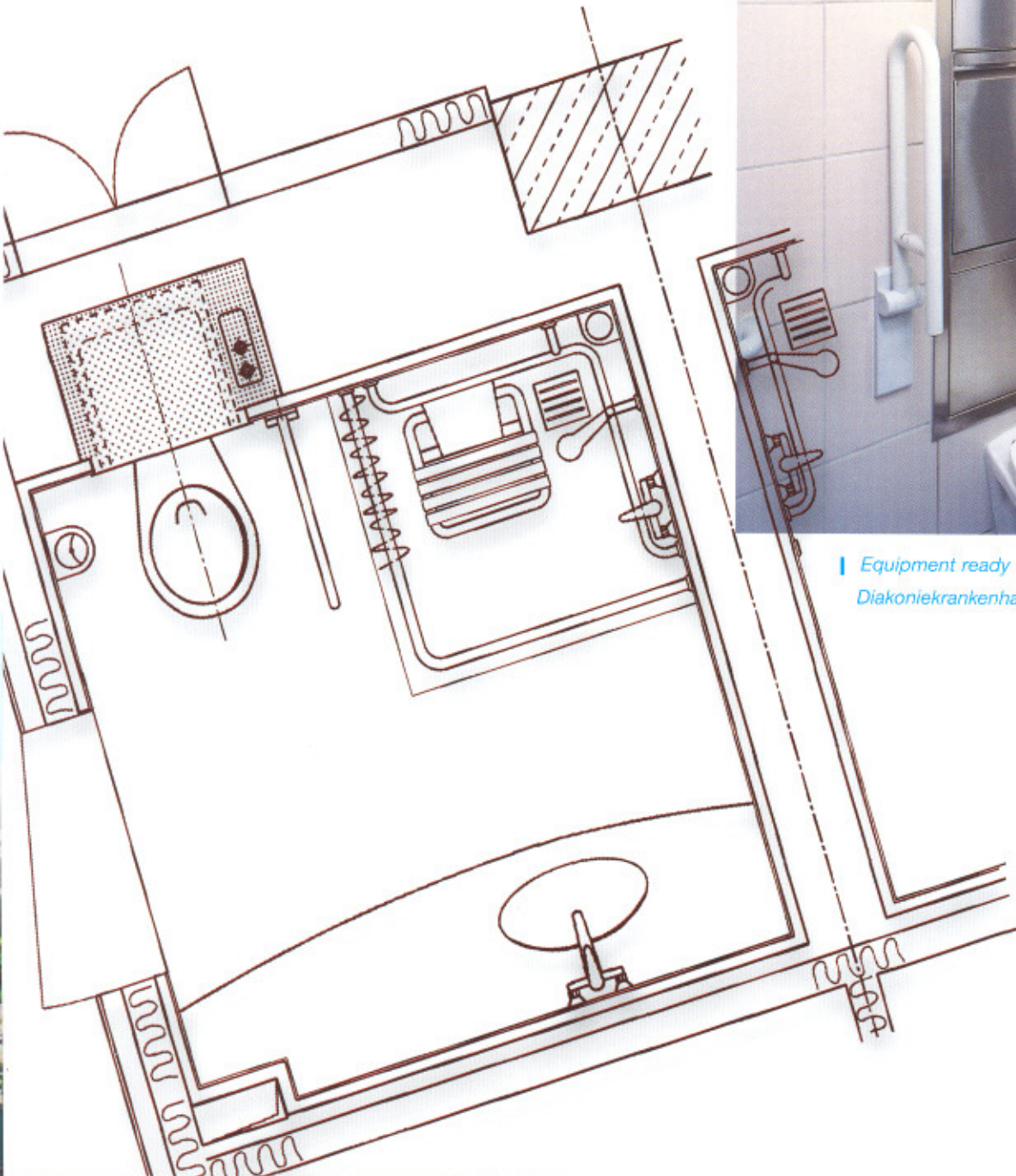
| Combined sluce unit with stainless steel rear wall and integral supply and waste pipes.



| Contaminated sluce room after modernisation.



## PLANNING AND CONSTRUCTION OF NEW BUILDINGS



| Equipment ready for operation in the  
*Diakoniekrankenhaus (Deaconry Hospital), Stuttgart.*

There is an increasing use of complete sanitary cells in the design and construction of new hospitals and care homes. Here too MEIKO provides optimal customised solutions for the integration of bedpan washer / disinfectors into sanitary cells.

Using a modular system,



Wet cell module with integral main frame.



the appliance frames are anchored in the sanitary cells in the early construction phase; even at this stage all the necessary connections for equipment installation at a later stage are in place. The bedpan washer is installed into its frame shortly before the completion of the building and is ready for operation immediately after its quick and easy installation. This procedure protects against contamination and damage during the construction of the building shell.

Timing and precision are crucial in the processing and manufacture of the equipment in these days of only narrow windows of opportunity available for the installation of wet rooms and the precise interlocking now expected of all the construction trades.

The sooner MEIKO consultants are involved in the project planning, the greater the benefit which the customer can derive from the possibilities offered by dynamic project management and the priceless practical experience of a forward-looking organisation.

It soon becomes evident that MEIKO is more than a manufacturer of modern cleaning and disinfection appliances - MEIKO is your skilled, flexible and reliable partner in all phases of construction, from planning through to hand-over.



Internal view of the sanitary cell as delivered to site. The installation frame for the bed-pan washer/disinfector is behind the covering which protects the equipment during transit.



Installation of the complete appliance and closing the external walls.



The MEIKO solution. The service doors in the corridor enable maintenance work to be carried out without disturbing the patient.



| Grosshadern Clinic, Munich, Germany



| Al Ahli Hospital, Qatar



| Frankfurt Hospital, Germany



| Inselspital Zürich, Switzerland



| UMC Utrecht, Netherlands

Appliances for cleaning bed-pans are subject to the conditions imposed by the European Medical Device Directory 93/42/EEC. These up-to-the-minute statutory requirements impact significantly on the design of renovation work.

It is no longer possible to recommend the modification of existing equipment. The law treats old equipment which has been modified in exactly the same way as new equipment: renovated equipment must therefore meet exactly the same requirements as new equipment.

The precise implication for designers and all involved in modernisation is that a complete master device file with detailed construction drawings, risk and hazard analyses and complete technical documentation must be compiled for every

## STATUTORY REQUIREMENTS FOR MODERN HYGIENE SYSTEM IN HOSPITALS AND CARE HOMES



| University Hospital Zürich, Switzerland

version of the equipment. Existing equipment which has been updated must be notified to the competent authority as if it were new and its compliance confirmed. In addition, the operator is subject to the Operators Regulations and is liable for the proper registration and use of the modified appliance.

In the light of these risks and uncertainties, new appliances are therefore the preferred option in renovation

work. The use of ultramodern technology enables the overall modification work on site to be significantly reduced.

Modern appliances provide optimal security, particularly in the prevention of nosocomial infections. The cleaning and disinfection result is very clearly dependent on the perfect combination of wash-chamber geometry, the wash-chamber itself and the vessels used.



| Saifee Hospital, Mumbai, India

The proven reliability of MEIKO bed-pan washer/disinfectors, the intensive research and dynamic product development which have gone into their design make MEIKO the first choice in cleaning and disinfection equipment.

Technical specifications and performance specifications are not everything. Ergonomic design, perfect workmanship and high-end electronics are natural product features for us. But that is still not enough. We consider that an ultra-modern product is only complete if advice, planning consultancy and service go hand in hand with technical advances and engineering skills. Only then will be put our name to the MEIKO brand, allow our hygiene systems to be placed under the magnifying glass and point with pride to our references.



| Heidelberg Hospital, Germany



| Hospital de los Angeles, Chile



| College of Medicine  
Hannover, Germany



| Centre d'hébergement,  
St. Jean Eudes, Canada

